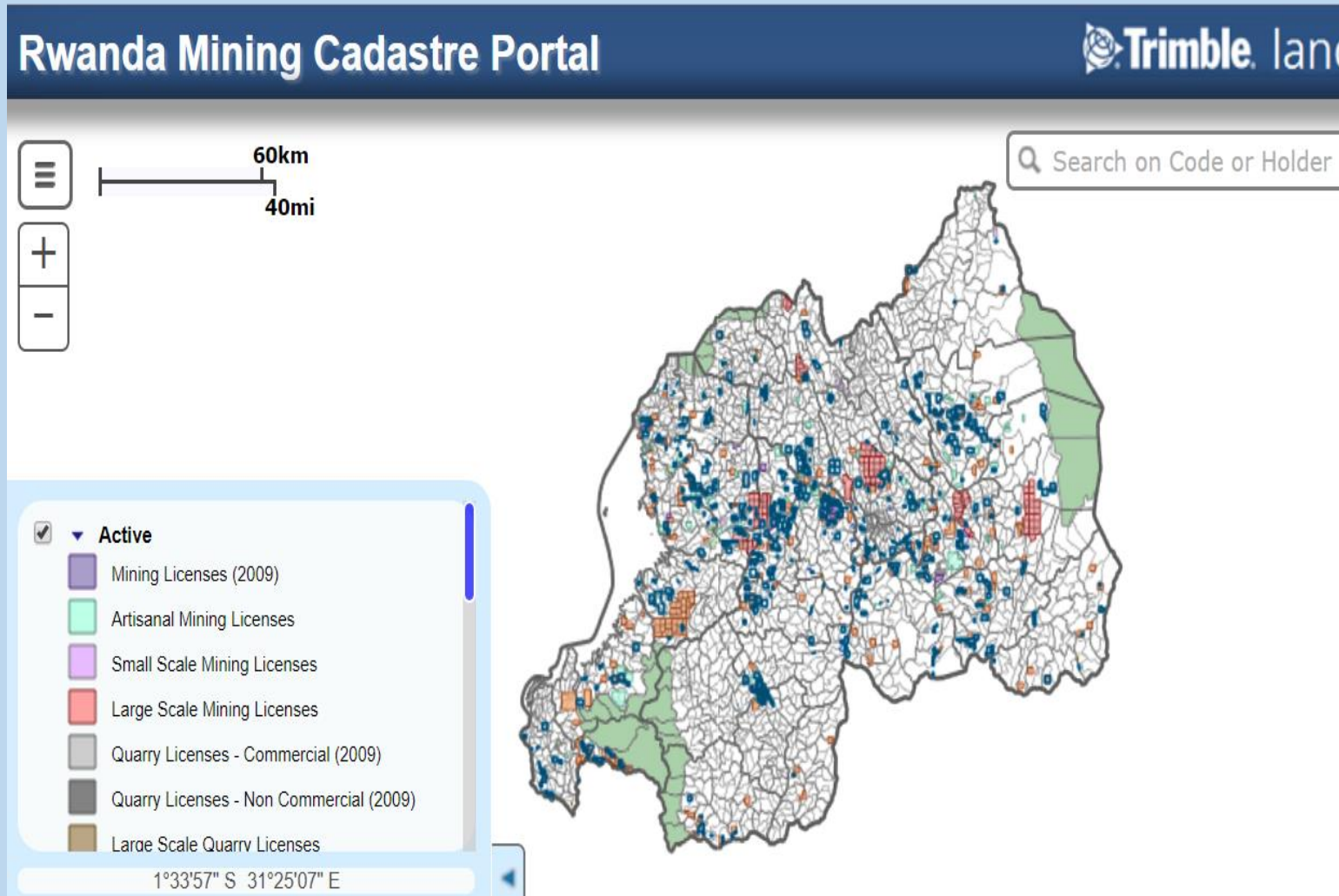


WATER MANAGEMENT IN MINES

Donat Nsengumuremyi
Director of Mineral Extraction and Processing Unit
Rwanda Mines, Petroleum and Gas Board

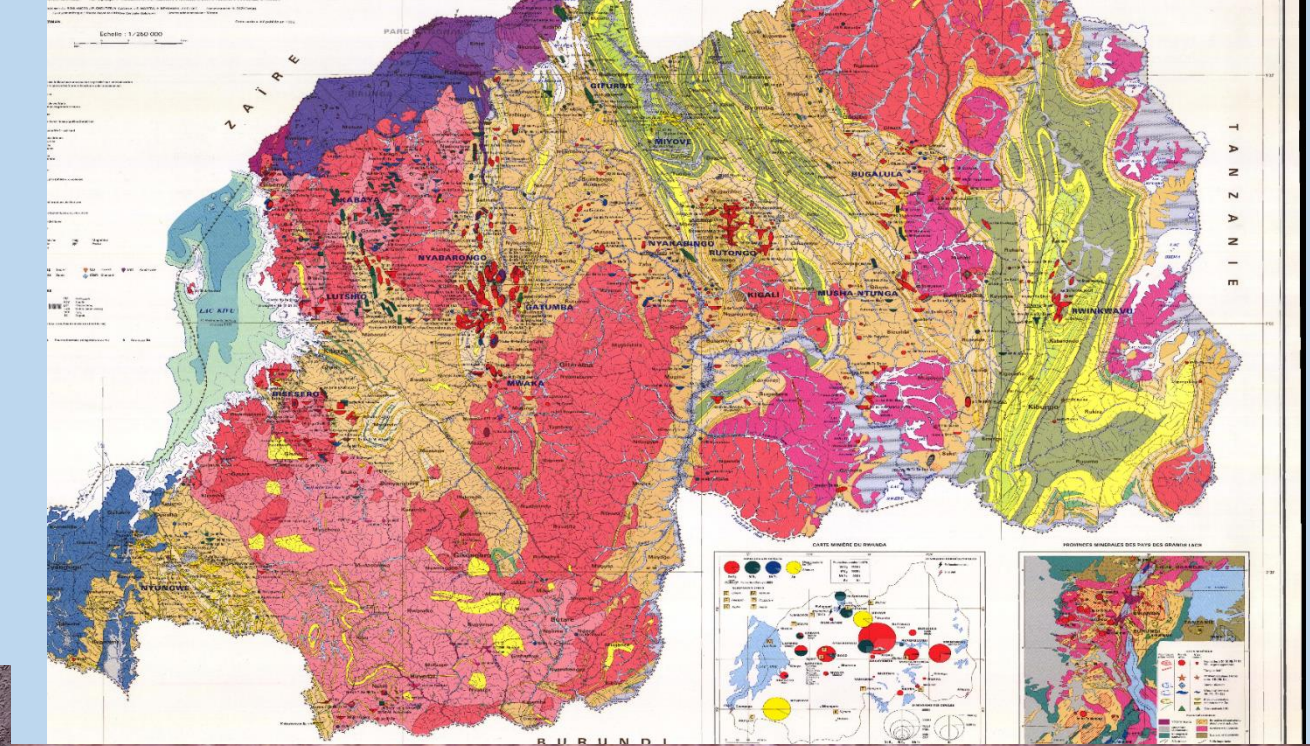
OUTLINE



- INTRODUCTION TO MINING OPERATIONS
- MINING TECHNIQUES
- USE OF WATER IN MINES
- FUTURE PLANS IN MINING;

1. MINING OPERATIONS

- Primary mineral deposits:
 - Hard rock
 - Soft rock
- Secondary deposits
- Mineral processing
- Re-processing of tailings



2. MINING TECHNIQUES

Open pit or underground techniques

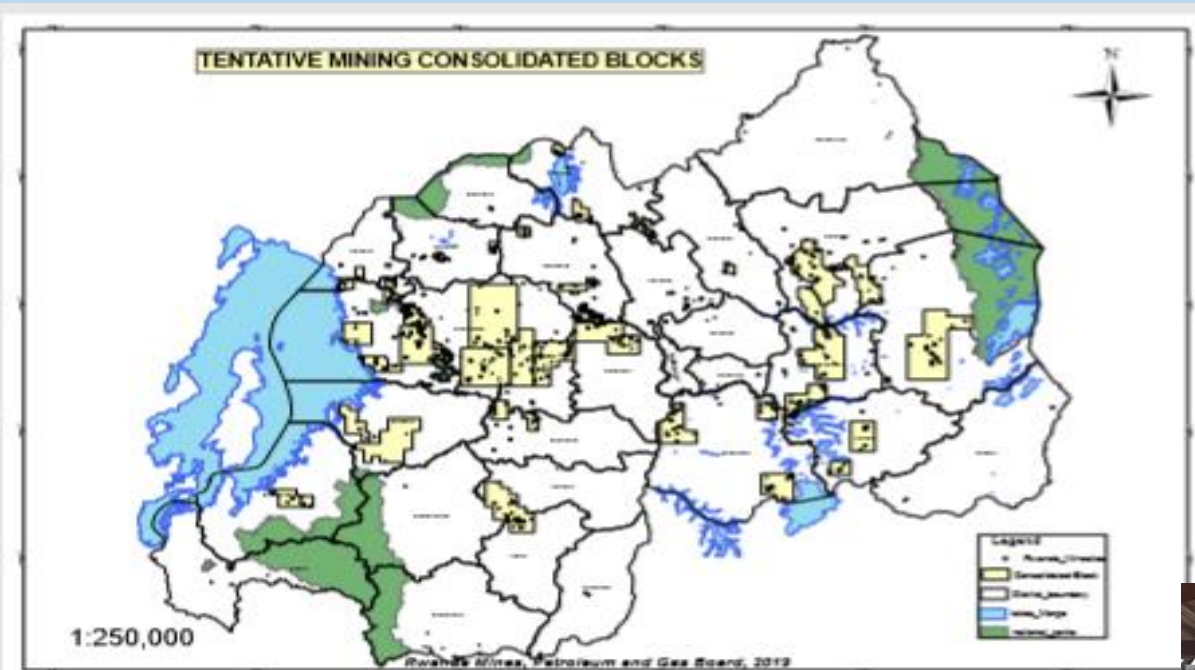


3.USE OF WATER IN MINES

- >80% artisanal mining
- Artisanal mining affect the overall production and poor management of water and mineral wastes
- Supply of water by gravity, pumping and recycling
- Water storage ;
- Like all other industries, mining operators need water to make bare rock give up its valuable minerals: which would not be possible without the use of water in mining.



4. FUTURE PLANS IN MINING



- Emphasize on mineral exploration;
- Improvement of mining techniques();
- From artisanal to professional and industrial mining/semi-mechanized with consolidation
- Environment protection and strong stakeholders engagement
- 7 years Gvt program: \$800M in 2020, \$1.5B (2024) mining income targets



THANK YOU FOR YOUR
ATTENTION