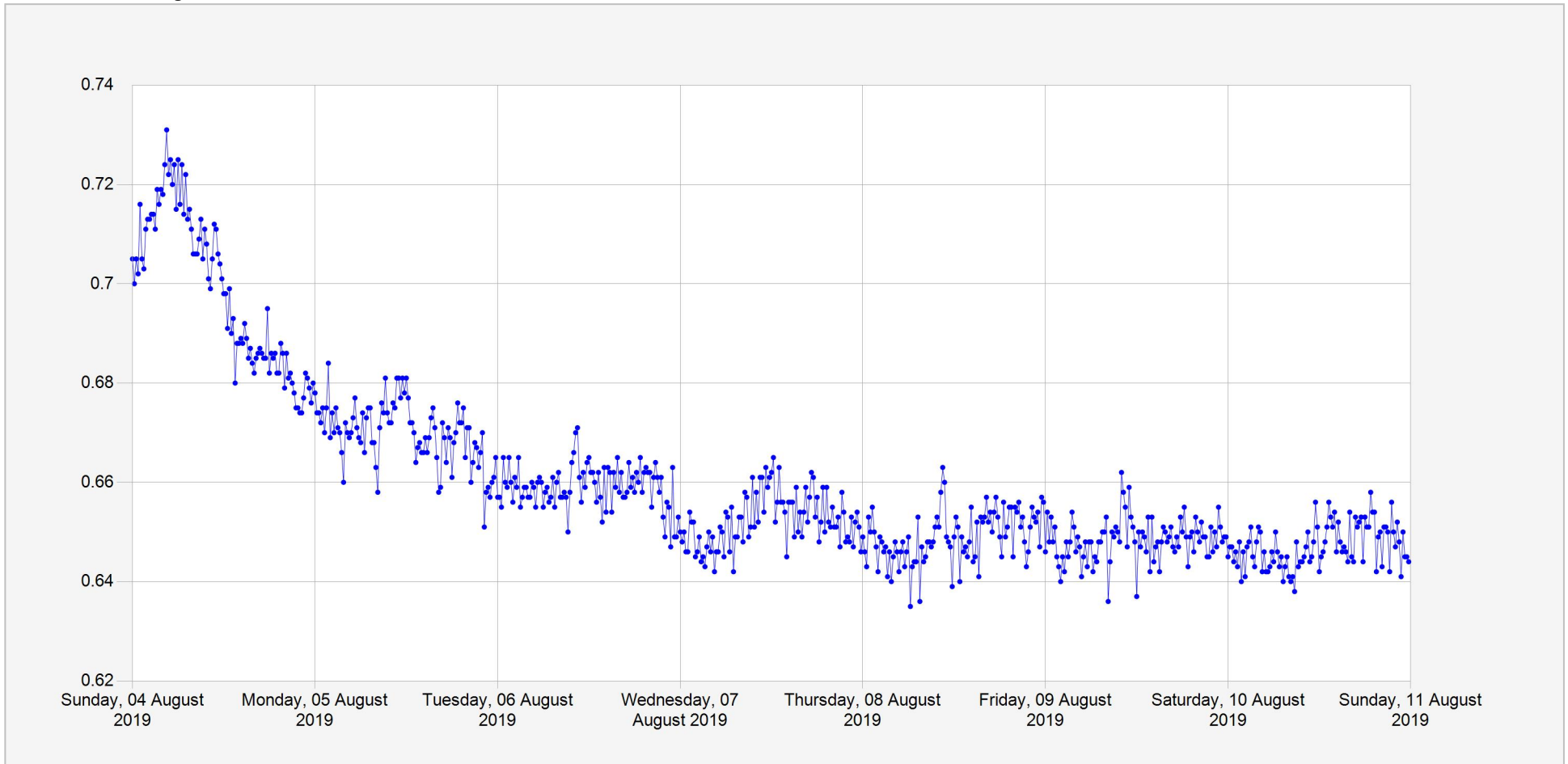




## Akanyaru Daily Water Level

**Units:** m  
**Identifier:** Stage.Telemetry@SW5  
**Location:** Akanyaru-upper

Week of: 2019-August-4



Date Processed: August 19, 2019 07:13

Page 1 of 2

**DISCLAIMER :**

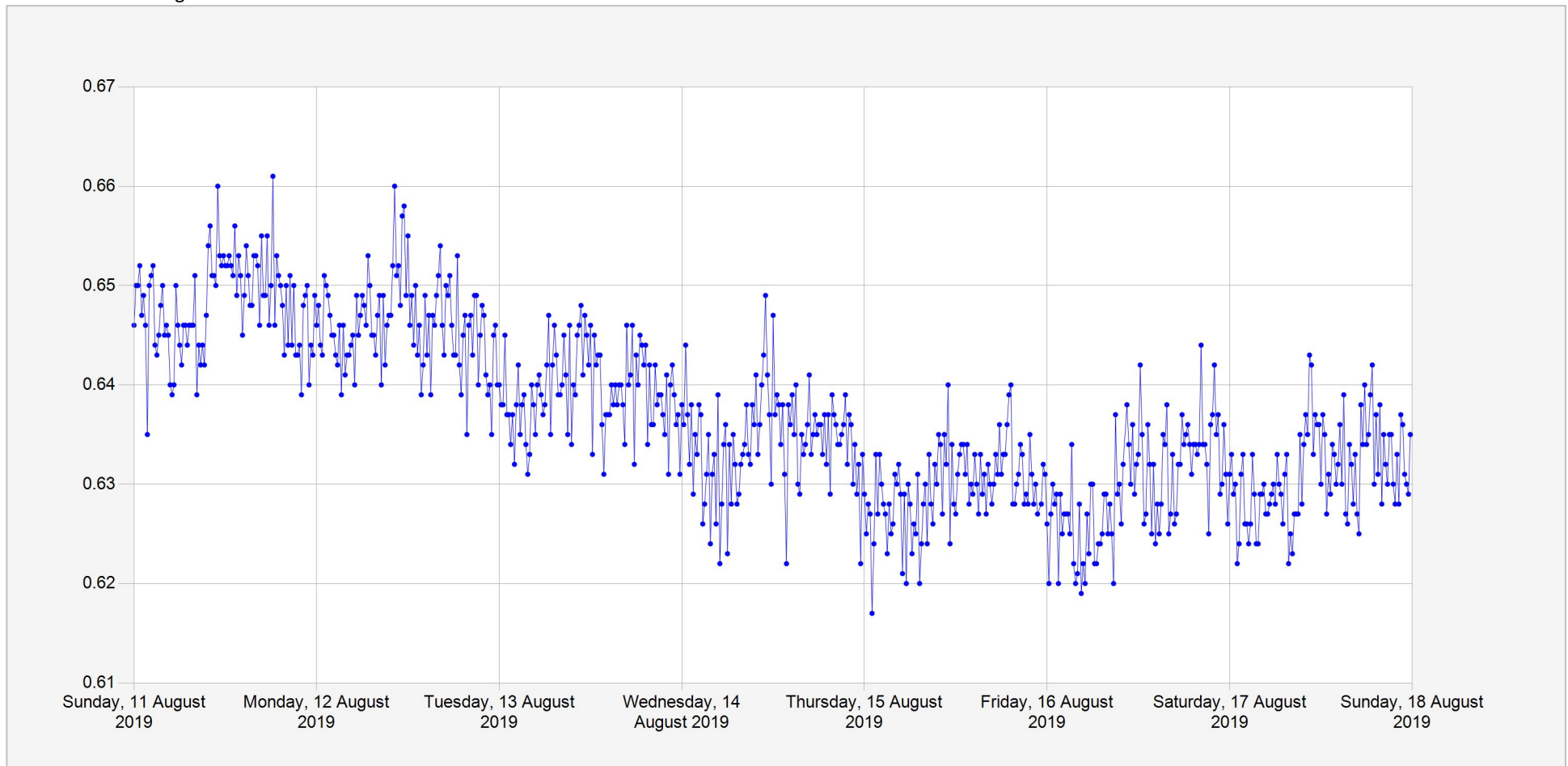
The data made available through this portal is provided by RWFA to help the sustainable development of water resources and increase our water knowledge base. We ask that resulting research and studies be published and shared with RWFA. Additionally the data is provided 'as is' and RWFA takes no responsibility for any loss or damage suffered as a result of using this data. By downloading this data you are explicitly agreeing to these conditions.



## Akanyaru Daily Water Level

**Units:** m  
**Identifier:** Stage.Telemetry@SW5  
**Location:** Akanyaru-upper

Week of: 2019-August-11



Date Processed: August 19, 2019 07:13

Page 2 of 2

**DISCLAIMER :**

The data made available through this portal is provided by RWFA to help the sustainable development of water resources and increase our water knowledge base. We ask that resulting research and studies be published and shared with RWFA. Additionally the data is provided 'as is' and RWFA takes no responsibility for any loss or damage suffered as a result of using this data. By downloading this data you are explicitly agreeing to these conditions.